

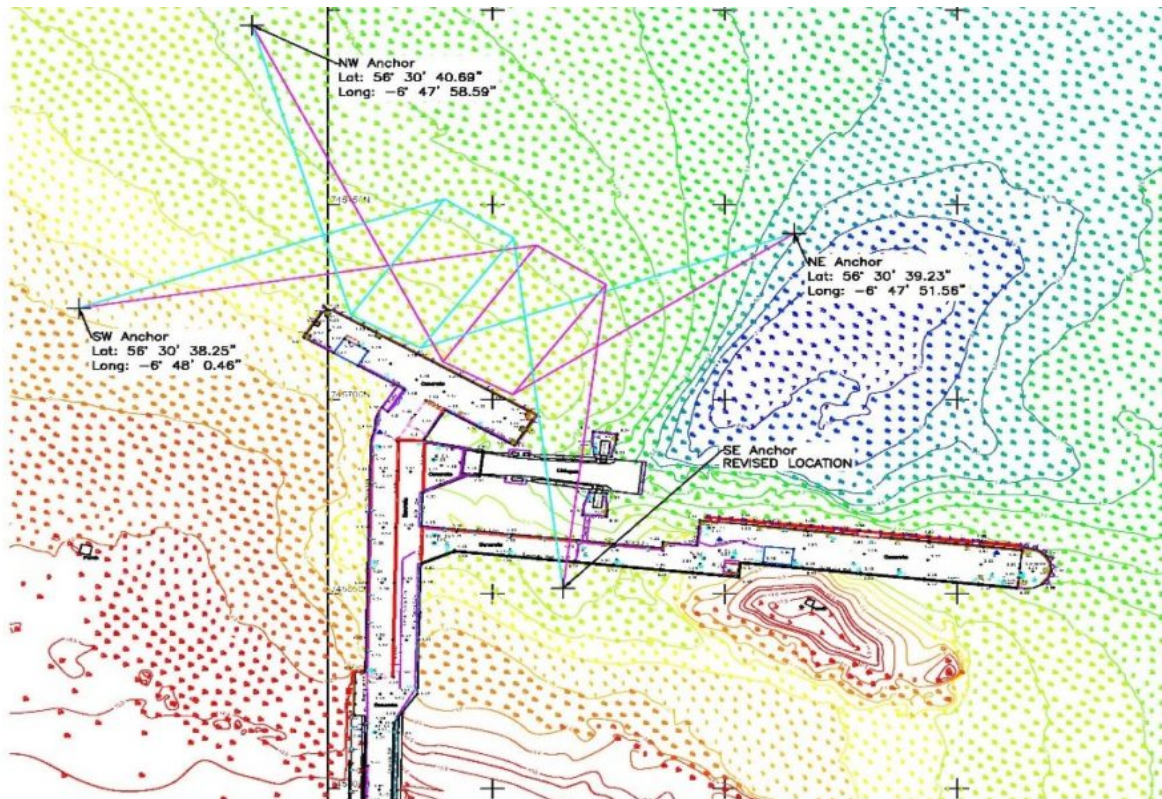
NTM 39/19 Tiree Ferry Terminal Old Pier Repair Works Updated

Categories : [Notice to Mariners](#)

Date : 26th July 2019

Latitude **56° 30.634?** North (WGS-84 datum)
Longitude **006° 47.932?** West (WGS-84 datum)

Further to NTM 31/19, mariners are advised that from the afternoon of 29th July 2019, George Leslie Ltd have contracted Coastworks to install a CW-3 Crane Barge 34.3m x 18.9m x 2.74m GT 530t to carry out works at the Tiree old pierhead. The barge will be held in place by four sea anchors, located as per the attached drawing. All marine refurbishment works will be carried out utilising a 70T crawler crane from this platform.



The works are scheduled to be concluded by end of October 2019 when the anchors will be removed, and the barge towed away.

Throughout this time scheduled ferry services will continue operation from the main pier linkspan berth, but mariners should be aware that the old pier continues to be closed to berthing

by all vessels. This will be strictly enforced throughout the period of the works.

All vessels navigating in the vicinity of Tiree Ferry Terminal are advised to exercise vigilance and pass at minimum safe manoeuvring speed and sufficient distance from the area of works to reduce the risk of damage or injury being caused by the passing vessel's wash or displacement. Owners and operators of high-speed vessels should be particularly vigilant regarding their speed and the wash that can be created.

Further details can be obtained using the contact details below.

David McHardie

Harbour Master

Caledonian Maritime Assets Limited
Municipal Buildings,
Fore St. Port Glasgow
PA1 4 5EQ

Tel: 01475 749 920