

Brodick Ferry Terminal Redevelopment – Project Update 13th March 2017 – Bulletin No. 6

Our principal contractor, George Leslie Ltd, started work at Brodick Ferry Terminal on Monday 11th January 2016. As noted at the public meeting on Thursday 3rd December 2015, the works are being delivered in 5 distinct Traffic Management Phases.

Phase 5 completion

We are approaching completion of Phase 5. We plan to switchover in week commencing 29th May which is later than planned, however, the overall project is still programmed to be completed on schedule in early August 2017.

The following will be completed in Phase 5:

- The new bus terminus remains operational and the new permanent bus shelters will be fully lit.
- The new terminal building external and internal construction will be completed to allow CFL and CMAL internal fit out to be concluded.
- Vehicle entry to the ferry from the new west entrance continues and is working well.
- Vehicle exit from the ferry will continue to be via the east end of the new terminal building onto Market Road.
- The east berth fixed ramp on the east side of the new pier will be completed.
- The linkspan on the west side of the new pier will be completed and commissioned.
- The pier deck and roundhead will be completed. The remaining 5 fender piles, fenders and deck furniture will be completed and the pier will be ready for the Adelte PAS installation.
- The new Fire Escape Building will be completed.
- The fixed bridge walkway between the new Terminal Building and the new Fire Escape Building will be completed.
- The coach drop-off, taxi ranks and new car park to the south of the new Terminal Building will be completed and will be used for additional marshalling until the new final marshalling layout comes into use in early August.

Installation of the Passenger Access System and Project Completion

George Leslie will complete their main contract by late May 2017 but as before this is progress and weather dependant. They are likely to retain a presence on site completing minor works and assisting with internal fit out of the building with CMAL and CFL equipment as we head towards the early August project completion date.

The installation of the Adelte Passenger Access System on the new Pier should commence on site in June 2017 and be completed and commissioned in July 2017 to allow the new pier to be opened for trial berthing before coming into use in early August 2017. The existing pier and causeway will be retained as backup until the new berthing and marshalling operation has been used by Calmac Ferries Limited and been proven to operate as intended for a period of approximately 4 weeks.

George Leslie Limited will return to complete Part 2 of the project after CFL confirm that the new berthing and marshalling is operating as planned and access for vessels to the existing pier and linkspan is no longer required. They will complete the final section of works on the existing pier and causeway provisionally at the beginning of September 2017.

Passenger information update

- Vehicular ferry traffic will continue to use the new marshalling area introduced in Phase 5.
- The CFL flyer issued at the start of Phase 5 indicated how the current layout affects ferry customers and a further update is likely to be issued before opening the new facilities in August 2017.
- Pedestrian access to the new bus stances and the existing ferry terminal building will remain to allow access to both areas.
- Access from the new marshalling area to the existing terminal building and pier has been established to the north side of the new bus shelters to allow ferry passengers to board on foot and allow safe access to and from the terminal building.
- The existing ticket office and facilities in the terminal building will continue to be operational.

We will share any changes to passenger information in early July 2017 before we complete the project in early August 2017. We are very grateful for the continued understanding and patience of the public throughout the project. In the interests of safety, passengers and vehicle owners using the facilities should adhere to guidance provided by the ferry and bus operators.

The Brodick Ferry Terminal Redevelopment Project is scheduled for completion in early August 2017.

Contact
Operational issues: Ferries – CalMac Ferries Ltd: enquiries@calmac.co.uk
Buses – Stagecoach Arran: Contact Tel: 01770 302000
For construction issues please contact:
George Leslie Ltd: mail@georgeleslie.co.uk
CMAL: operations@cmassets.co.uk

Brodick Ferry Terminal Redevelopment

Employer



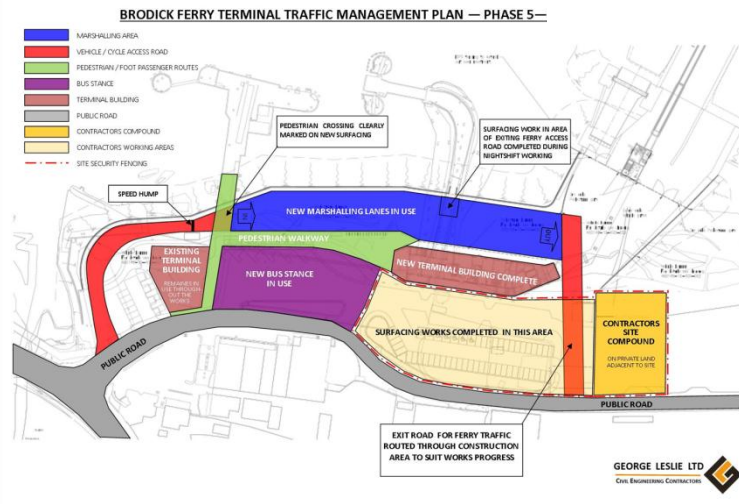
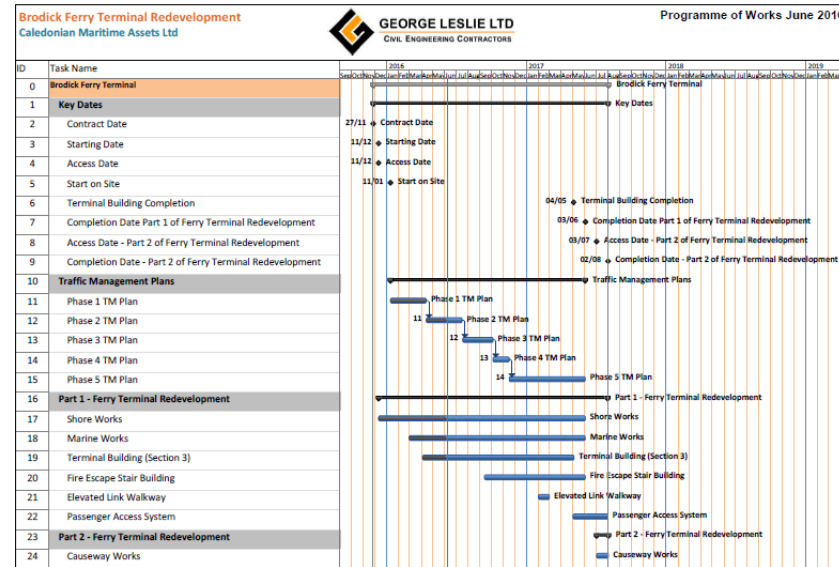
Contractor



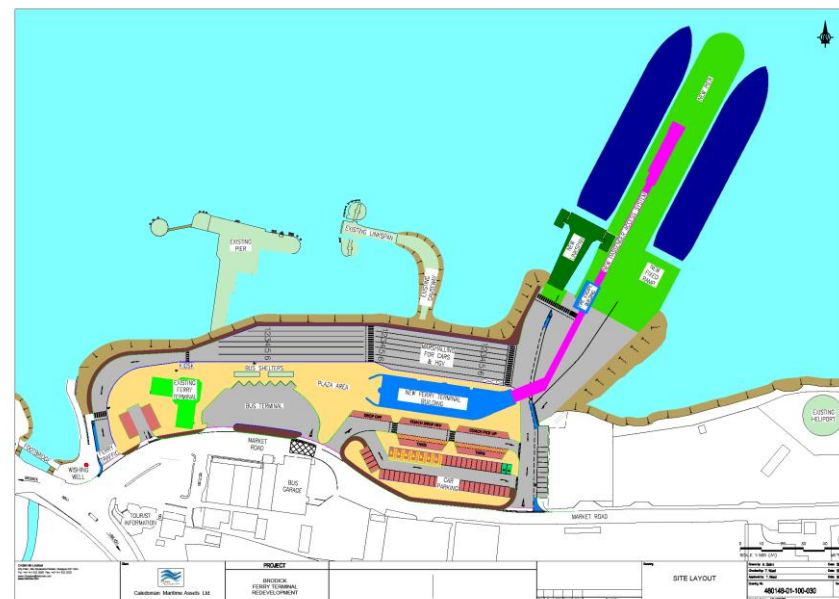
Project Manager



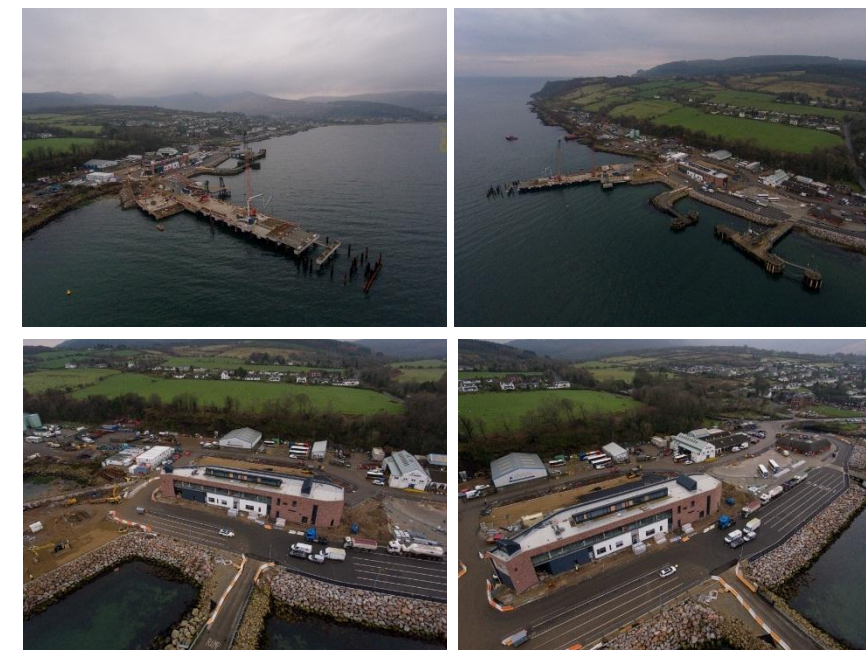
Funding Partners



Brodick Ferry Terminal Redevelopment Programme



3/3 to 13/3/2017 New Fixed Walkway Delivery and Installation



Traffic Management Plan Phase 5

Brodick Ferry Terminal Redevelopment Layout Plan

15/2/2017 Aerial Views of Brodick Ferry Terminal Redevelopment.