

Brodick Ferry Terminal Redevelopment – Project Update 29th September 2016 – Bulletin No. 4

Our principal contractor, George Leslie Ltd, started work at Brodick Ferry Terminal on Monday 11th January 2016. As noted at the public meeting on Thursday 3rd December 2015, the works are being delivered in five distinct Traffic Management Phases.

Phase 3 completion

We have now completed Phase 3 and are commencing Phase 4 slightly earlier than planned with a switchover programmed for Thursday 29th September.

The following has been completed in Phase 3:

- New terminal building – the roof and rooflight glazing are substantially complete, the external protective boards and insulation are complete over the majority of the outside of the building, installation of the support framework has commenced to allow the external sandstone rainscreen cladding to commence.
- East revetment rock core, secondary and primary armour continues at the fixed ramp bulkhead at the east end.
- The west entrance construction commenced in early August. The existing pier has been cut at the south end and a temporary pedestrian ramp installed to allow entry and exit from the ferry.
- A temporary ramp to the new east area marshalling surfacing has been constructed for the Phase 3 to 4 switchover.
- Piling operations on the new pier have progressed well and there are now only 16 piles to be installed. 13 at the roundhead and 3 at the fixed pier bulkhead. Pile cross beams and main pier beams are installed on 6 pile grids.
- The outer and inner lifting dolphin concreting operation is complete and will allow linkspan installation early November.

Phase 4

Phase 4 will last for approximately 6 weeks, with a scheduled completion date in week commencing Monday 11th November 2016 and will see the Temporary Marshalling area direction of ferry traffic flow changing where traffic will enter and exit the existing causeway to the east of the new terminal building. The new bus terminus remains operational and unchanged.

The main entrance to the new marshalling area along with a small car park to the west of the existing terminal building will be completed in Phase 4. When completed this will allow entry to the ferry from the west end and exit will continue to be via the east end of the new terminal building onto Market Road.

The new terminal building is progressing well and the external sandstone rainscreen cladding should commence in Phase 4. The roof and external glazing should be completed to ensure the building is wind and watertight to allow internal construction to be completed in a dry environment.

The new pier construction will continue and additional precast concrete crossbeams will be installed on top of the new pier piles. Pre-stressed concrete beams will continue to be installed between the crossbeams to allow the main pier deck construction to proceed. The final 16 pier and bulkhead piles will be delivered and driven into position.

Passenger information update

- Pedestrian access to the new bus and the existing ferry terminal building will remain to allow access to both areas.
- Access from the temporary marshalling area to the existing terminal building and pier will remain to the north side of the new bus terminal to allow car passengers to board the ferry on foot and allow safe access to and from the terminal building.
- The temporary pedestrian walkway installed along the north side of Market Road will remain in use.
- Vehicular ferry traffic will continue to use the temporary marshalling area until completion of Phase 4.
- The temporary ticket office and mobility impaired toilet facilities will remain in place throughout Phase 4.
- The existing ticket office and facilities in the terminal building will continue to be operational.

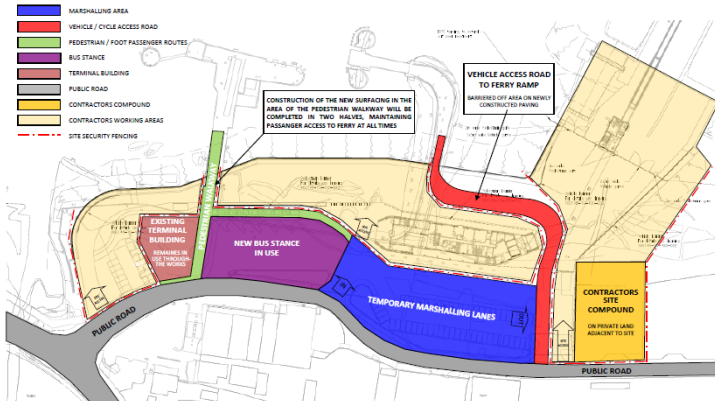
We will share any changes to passenger information before we start Phase 5 of the project in November. We are very grateful for the continued understanding and patience of the public throughout the project. In the interests of safety, passengers and vehicle owners using the facilities should adhere to guidance provided by the ferry and bus operators.

The Brodick Ferry Terminal Redevelopment Project is scheduled for completion in August 2017.

Contact

Operational issues: Ferries – CalMac Ferries Ltd: enquiries@calmac.co.uk
 Buses – Stagecoach Arran: Contact Tel: 01770 302000
 For construction issues please contact:
 George Leslie Ltd: mail@georgeleslie.co.uk
 CMAL: operations@cmassets.co.uk

BRODICK FERRY TERMINAL TRAFFIC MANAGEMENT PLAN – PHASE 4



GEORGE LESLIE LTD
 Civil Engineering Contractors

Brodick Ferry Terminal Redevelopment

Employer



Contractor



Project Manager



Funding Partners



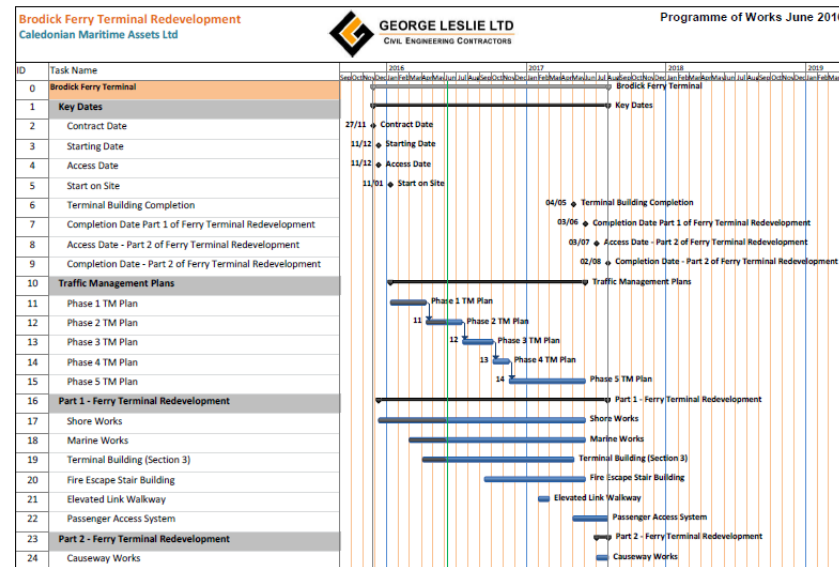
Rendered 3D Image New Brodick Ferry Terminal Building



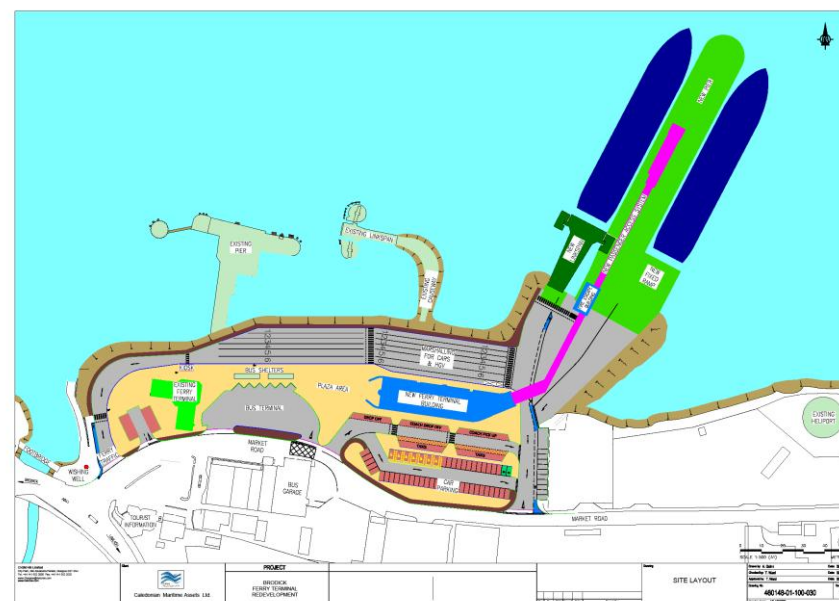
26/9/2016 Insulation and Framing South Elevation New Terminal Building



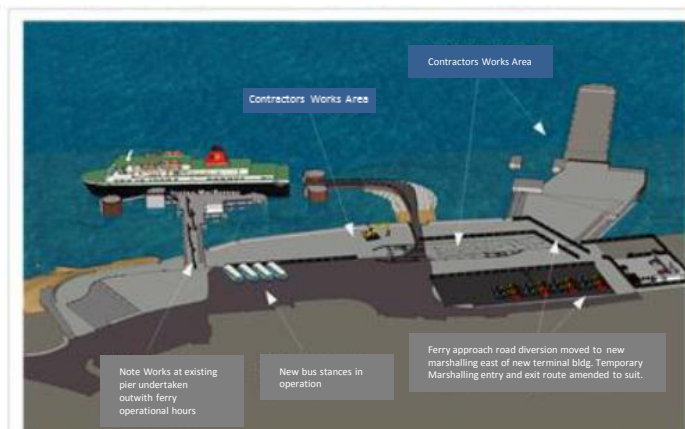
Rendered 3D Image New Brodick Ferry Terminal Building



Brodick Ferry Terminal Redevelopment Programme



Brodick Ferry Terminal Redevelopment Layout Plan



Note: Works at existing pier undertaken outwith ferry operational hours
 New bus stances in operation
 Ferry approach road diversion moved to new marshalling east of new terminal bldg. Temporary Marshalling entry and exit route amended to suit.

Brodick Ferry Terminal Redevelopment – Phase 4

Traffic Management Plan Phase 4