

**Brodick Ferry Terminal Redevelopment – project update August 2016 – Bulletin No. 3**

Our principal contractor, George Leslie Ltd, started work at Brodick Ferry Terminal on Monday 1<sup>st</sup> January 2016. As noted at the public meeting on Thursday 3<sup>rd</sup> December 2015, the works are being delivered in five distinct Traffic Management Phases.

**Phase 2 completion**

We have now completed Phase 2 after a short delay that allowed the Brodick Highland Games pipe bands the opportunity to parade in the new bus stance area and have now moved on to Phase 3 of the redevelopment project.

The following was completed in Phase 2:

- six new bus stances
- New terminal building - foundations, ground and first floor concrete floors installed, main steel frame substantially complete
- East and west revetment rock core, secondary and primary armour and wall construction
- Piling and construction operations on the south side of the new pier

**Phase 3**

Phase 3 will last for approximately 9 weeks, with a scheduled completion date week commencing Monday 3<sup>rd</sup> October 2016.

The new bus terminus was brought into operation on Tuesday 9<sup>th</sup> August. The old bus stance has now closed and construction work has started on the new marshalling area access road at the west end of the site.

The new terminal building is progressing well and the ground and first floor concrete floor slabs are now in place. The roof continues to progress and the external and internal walls will be constructed in Phase 3.

The east and west revetment area construction continues to progress on schedule. The precast concrete retaining walls are now in position and the majority of the primary rock armour toe is now below sea level and in front of the retaining wall on the seaward side to protect against wind and wave action. George Leslie Ltd will send an additional 900 tonnes of material to Brodick beach for the benefit of the Brodick Improvement Committee in the coming weeks.

The new pier construction continues and precast concrete crossbeams will be installed on top of the new pier piles. Pre-stressed concrete beams will go between the crossbeams to allow the main pier deck construction to begin. The pier piles will continue to be delivered and driven into position.

George Leslie Ltd has built two more temporary piers to help with offloading materials and the 100 tonne crawler crane will continue to assist piling operations from the land. Another crawler crane (70 tonne) has arrived to assist operations on land.

**Passenger information update**

- Pedestrian access to the new bus and the existing ferry terminal building will be altered to allow access to both areas.
- Access from the temporary marshalling area to the existing terminal building and pier will be re-routed to the north side of the new bus terminals to allow car passengers to board the ferry on foot if required and allow safe access to and from the terminal building facilities, if required.
- The temporary pedestrian walkway installed along the north side of Market Road will be resurfaced and remain in use.
- Vehicular ferry traffic will continue to use the temporary marshalling area until completion of Phase 3.
- The temporary ticket office and mobility impaired toilet facilities will remain in place throughout Phases 2 to 4.
- The existing ticket office and facilities in the terminal building will continue to be operational.

We will share any changes to passenger information in late September before we start Phase 4 of the project. We are very grateful for the continued understanding and patience of the public throughout the project. In the interests of safety, passengers and vehicle owners using the facilities should adhere to guidance provided by the ferry and bus operators.

The Brodick Ferry Terminal Redevelopment is scheduled for completion in August 2017.

**Contact**  
Operational issues: Ferries – CalMac Ferries Ltd: enquiries@calmac.co.uk  
Buses – Stagecoach Arran: Contact: Tel: 01770 302000  
For construction issues please contact:  
George Leslie Ltd: mail@georgeleslie.co.uk  
CMAL: operations@cmassets.co.uk

# Brodick Ferry Terminal Redevelopment

**Employer**



**Contractor**



**Project Manager**



**Funding Partners**



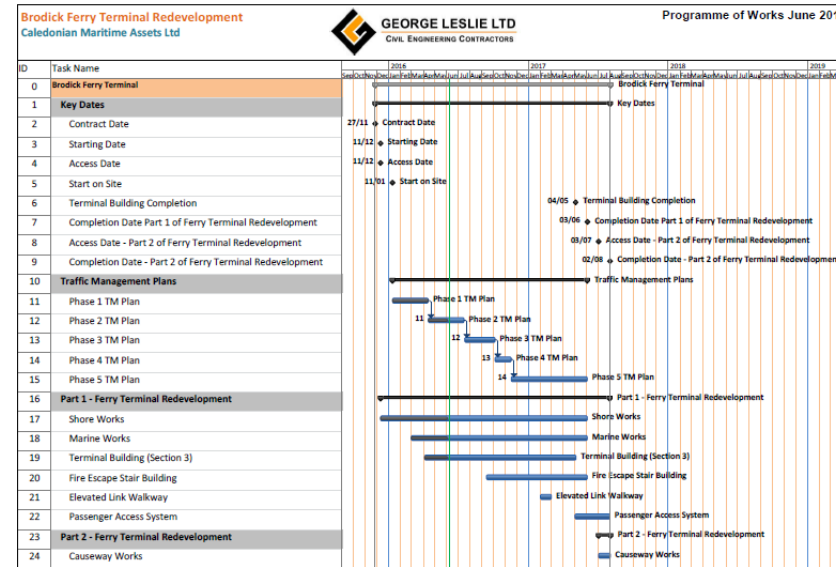
Rendered 3D Image New Brodick Ferry Terminal Building



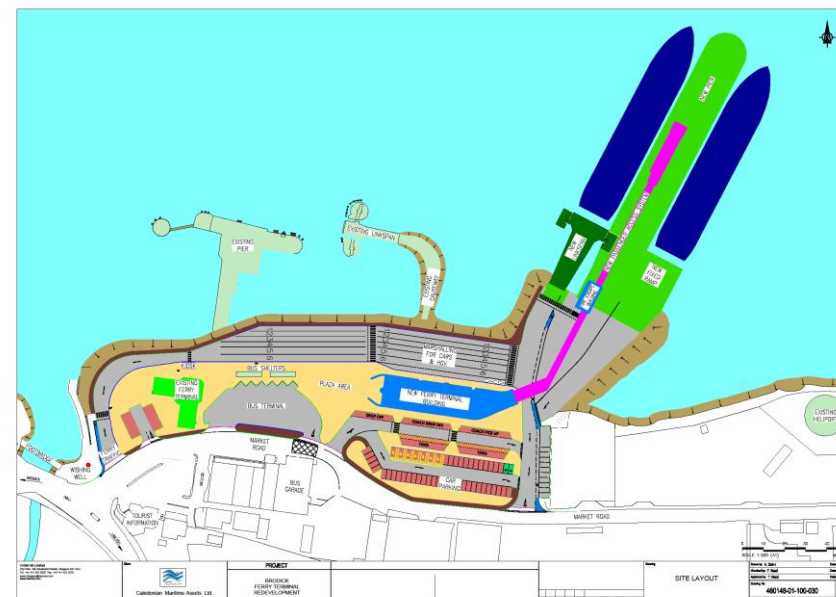
Aerial view looking west over site



Rendered 3D Image New Brodick Ferry Terminal Building



Brodick Ferry Terminal Redevelopment Programme



Brodick Ferry Terminal Redevelopment Layout Plan

**BRODICK FERRY TERMINAL TRAFFIC MANAGEMENT PLAN — PHASE 3**



Brodick Ferry Terminal Redevelopment

Phase 3

Traffic Management Plan Phase 3 Plan and 3D view