

Brodick Ferry Terminal Redevelopment – project update July 2016 – Bulletin No. 2

Our principal contractor, George Leslie Ltd, started work at Brodick Ferry Terminal on Monday 11th January 2016. As noted at the public meeting on Thursday 3rd December 2015, the works are being delivered in five distinct Traffic Management Phases.

Phase 2 completion

We have now completed Phase 2 one week ahead of schedule and will soon be moving on to Phase 3 of the redevelopment project.

The following was completed in Phase 2:

- Six new bus stances
- New terminal building - foundations, ground and first floor concrete floors installed, main steel frame substantially complete
- East and west revetment rock core, secondary and primary armour and wall construction
- Piling and construction operations on the south side of the new pier

Phase 3

Phase 3 will last for approximately 10 weeks, with a scheduled completion date week commencing Monday 3rd October 2016.

The new bus terminus will be open from Friday 29th July. The old bus stance will close and construction work will start on the new marshalling area access road at the west end of the site.

The new terminal building is progressing well and the ground and first floor concrete floor slabs are now in place. The roof continues to progress and the external and internal walls will be constructed in Phase 3.

The east and west revetment area construction continues to progress on schedule. The precast concrete retaining walls are now in position and the majority of the primary rock armour toe is now below sea level and in front of the retaining wall on the seaward side to protect against wind and wave action. George Leslie Ltd will send an additional 900 tonnes of material to Brodick beach for the benefit of the Brodick Improvement Committee in the coming weeks.

The new pier construction continues and precast concrete crossbeams will be installed on top of the new pier piles. Pre-stressed concrete beams will go between the crossbeams to allow the main pier deck construction to begin. The pier piles will continue to be delivered and driven into position.

George Leslie Ltd has built two more temporary piers to help with offloading materials and the 100 tonne crawler crane will continue to assist piling operations from the land.

Passenger information update

- Pedestrian access to the new bus and the existing ferry terminal building will be altered to allow access to both areas.
- Access from the temporary marshalling area to the existing terminal building and pier will be re-routed to the north side of the new bus terminals to allow car passengers to board the ferry on foot if required and allow safe access to and from the terminal building facilities, if required.
- The temporary pedestrian walkway installed along the north side of Market Road will be resurfaced and remain in use.
- Vehicular ferry traffic will continue to use the temporary marshalling area until completion of Phase 3.
- The temporary ticket office and mobility impaired toilet facilities will remain in place throughout Phases 2 to 4.
- The existing ticket office and facilities in the terminal building will continue to be operational.

We will share any changes to passenger information in late September before we start Phase 4 of the project. We are very grateful for the continued understanding and patience of the public throughout the project. In the interests of safety, passengers and vehicle owners using the facilities should adhere to guidance provided by the ferry and bus operators.

The Brodick Ferry Terminal Redevelopment is scheduled for completion in August 2017.

Contact

Operational issues: Ferries – CalMac Ferries Ltd: enquiries@calmac.co.uk
 Buses – Stagecoach Arran: Contact Tel: 01770 302000
 For construction issues please contact: George Leslie Ltd: mail@georgieslie.co.uk
 CMAL: operations@cmassets.co.uk

Brodick Ferry Terminal Redevelopment

Employer **Contractor** **Project Manager**



Funding Partners



New Brodick Ferry Terminal Building 3D Views

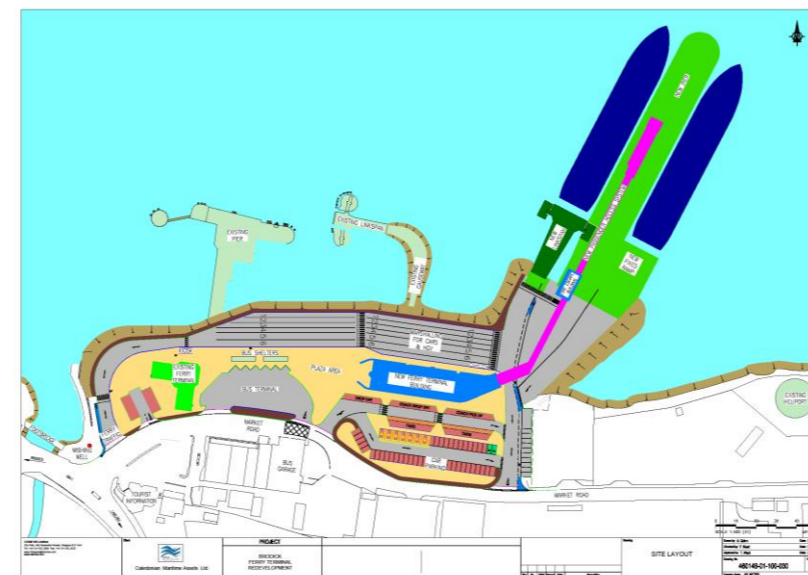


Aerial view looking west over site

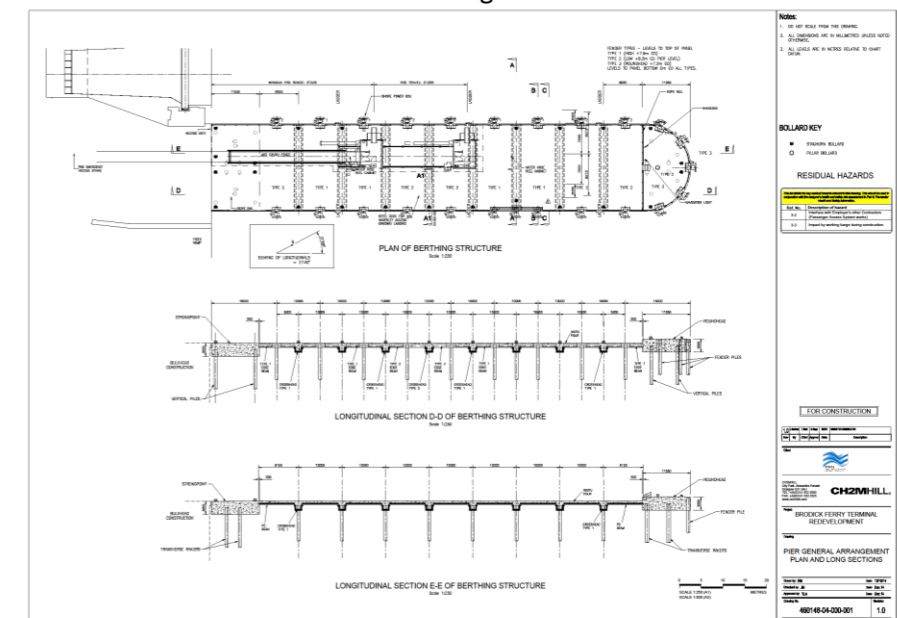


ID	Task Name	START	FINISH
0	Brodick Ferry Terminal		
1	Key Dates		
2	Contract Date	27/11	Contract Date
3	Starting Date	14/12	Starting Date
4	Access Date	14/12	Access Date
5	Start on Site	22/11	Start on Site
6	Terminal Building Completion	04/08	Terminal Building Completion
7	Completion Date - Part 1 of Ferry Terminal Redevelopment	02/06	Completion Date - Part 1 of Ferry Terminal Redevelopment
8	Access Date - Part 2 of Ferry Terminal Redevelopment	01/07	Access Date - Part 2 of Ferry Terminal Redevelopment
9	Completion Date - Part 2 of Ferry Terminal Redevelopment	02/08	Completion Date - Part 2 of Ferry Terminal Redevelopment
10	Traffic Management Plans		
11	Phase 1 TM Plan		Phase 1 TM Plan
12	Phase 2 TM Plan		Phase 2 TM Plan
13	Phase 3 TM Plan		Phase 3 TM Plan
14	Phase 4 TM Plan		Phase 4 TM Plan
15	Phase 5 TM Plan		Phase 5 TM Plan
16	Part 1 - Ferry Terminal Redevelopment		Part 1 - Ferry Terminal Redevelopment
17	Shore Works		Shore Works
18	Marine Works		Marine Works
19	Terminal Building (Section 3)		Terminal Building (Section 3)
20	Fire Escape Stair Building		Fire Escape Stair Building
21	Elevated Link Walkway		Elevated Link Walkway
22	Passenger Access System		Passenger Access System
23	Part 2 - Ferry Terminal Redevelopment		Part 2 - Ferry Terminal Redevelopment
24	Causeway Works		Causeway Works

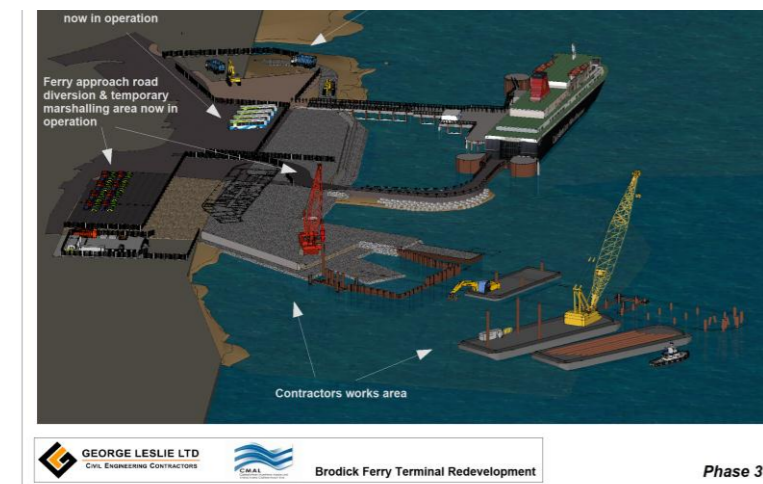
Brodick Ferry Terminal Redevelopment Programme



Brodick Ferry Terminal Redevelopment layout



Pier General Arrangement Plan and Longitudinal Sections



Traffic Management Plan Phase 3 Plan and 3D view