

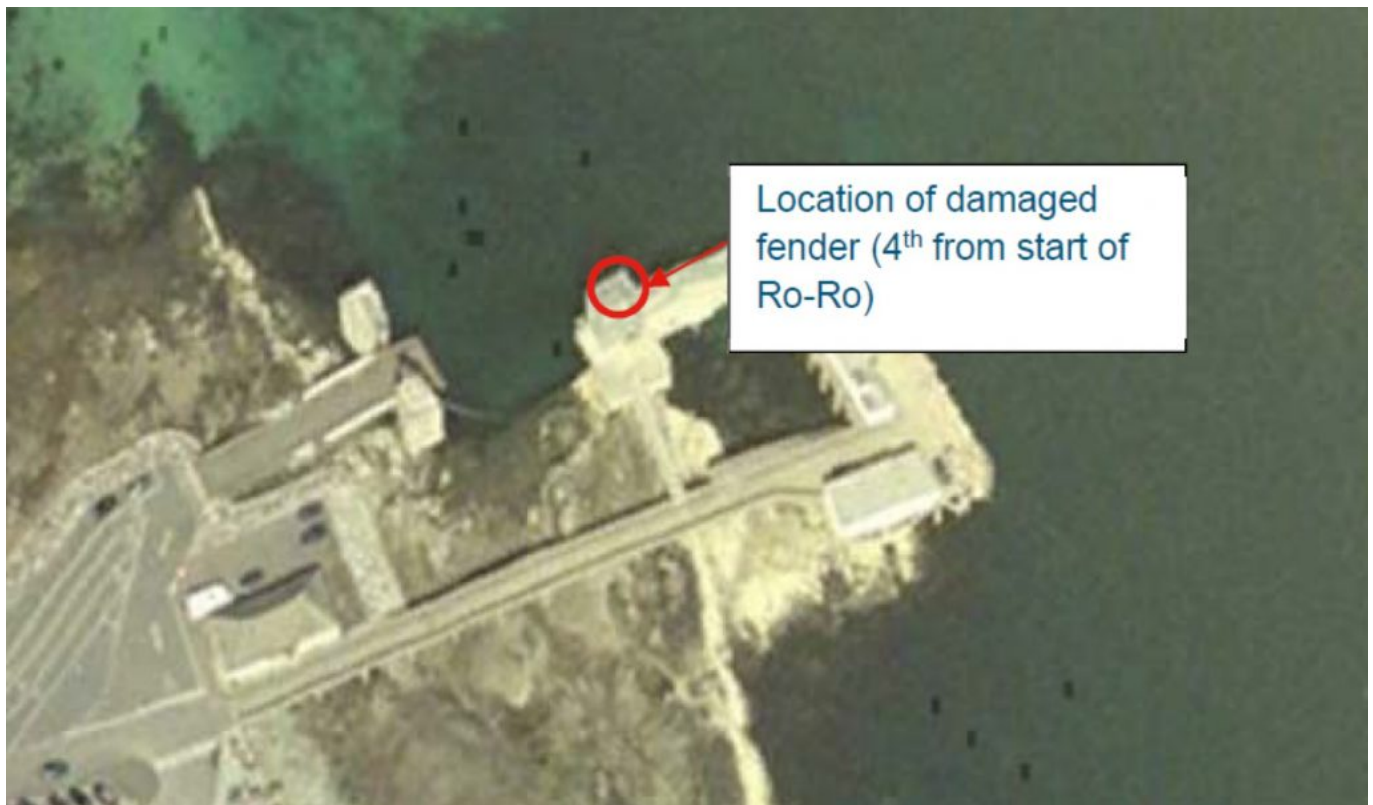
# NTM 78/18 Armadale Ferry Terminal Isle Of Skye Linkspan Berth Fender Damage

Categories : [Uncategorized @gd](#)

Date : 28th August 2018

**Latitude** 57° 3.901? North (WGS-84 datum)  
**Longitude** 005° 53.646? West (WGS-84 datum)

Mariners are advised that damage has been caused to a timber fender pile located on the linkspan berth, Armadale Ferry Terminal, Sleat, Isle of Skye.



Until repairs to the fender can be undertaken and to maintain the integrity of the pile it is requested vessels using the linkspan berth proceed with caution and minimise their berthing velocity in-so-far as prevailing conditions allow.

Further details can be obtained using the contact details below:

David McHardie  
**Harbour Master**

Caledonian Maritime Assets Limited  
Municipal Buildings, Fore St.,  
Port Glasgow  
PA1 4 5EQ  
Tel: 01475 749 920  
email: [info@cmassets.co.uk](mailto:info@cmassets.co.uk)