



## **NTM 68/18 Colintraive ferry slipways Kyles of Bute slipway reconstruction works - update**

**Categories :** [Uncategorized @gd](#)

**Date :** 3rd August 2018

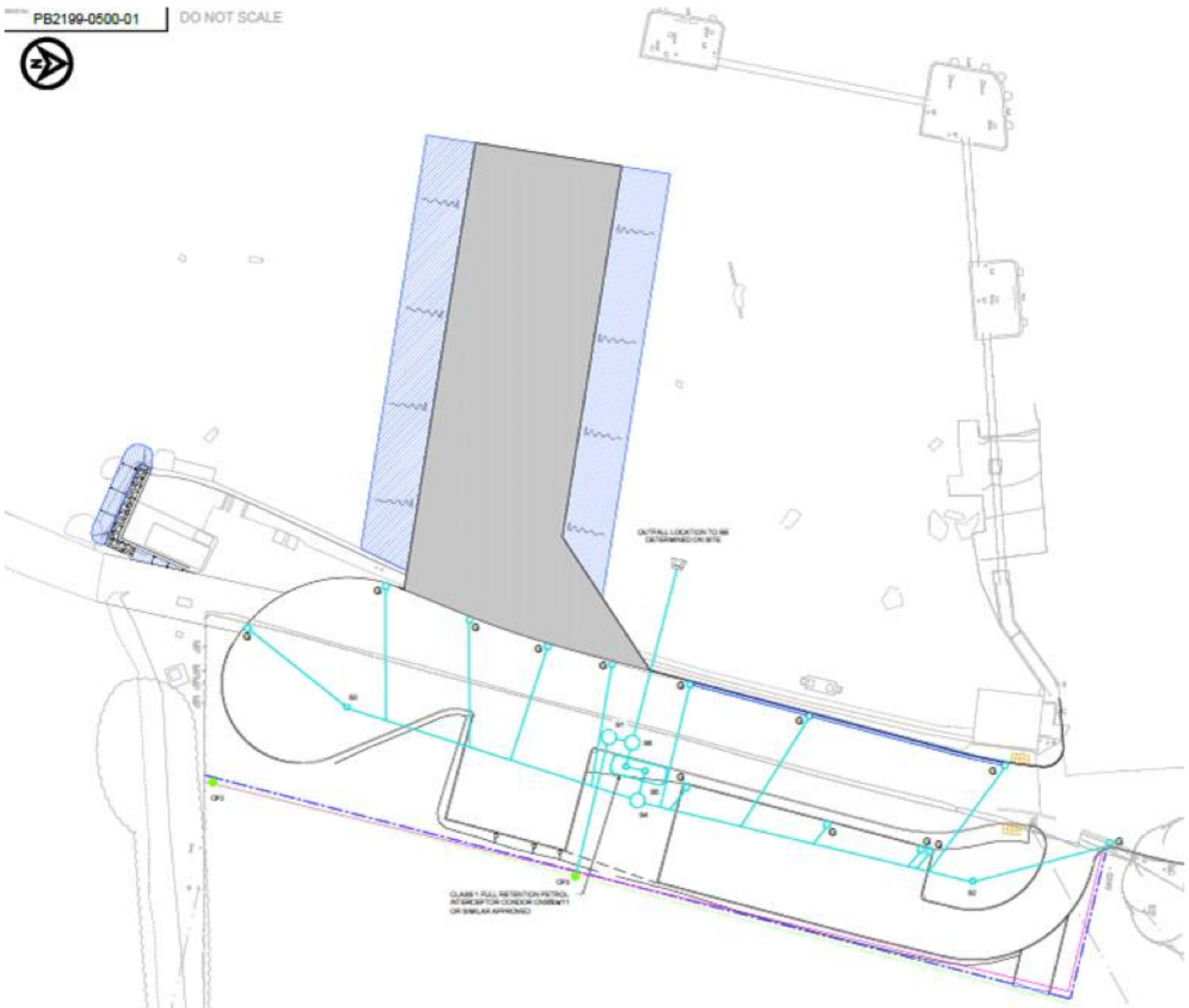
**Latitude** 55° 55.369? North (WGS-84 datum)

**Longitude** 005° 9.194? West (WGS-84 datum)

Mariners are advised that works to install sheet piles at Colintraive Secondary Slipway, Kyles of Bute will commence on 09 August 2018.

Contractors Raynesway Ltd will be operating from the shore and works are scheduled to be completed within approximately 3 weeks.

### **Colintraive Ferry Terminal**



All vessels navigating in the vicinity of Colintrave Ferry Terminal during this time are advised to proceed with caution and regulate their speed to minimise the effects of wash accordingly.

Further details can be obtained using the contact details below:

David McHardie  
**Harbour Master**

Caledonian Maritime Assets Limited  
Municipal Buildings, Fore St.,  
Port Glasgow  
PA1 4 5EQ  
Tel: 01475 749 920  
email: [info@cmassets.co.uk](mailto:info@cmassets.co.uk)

