

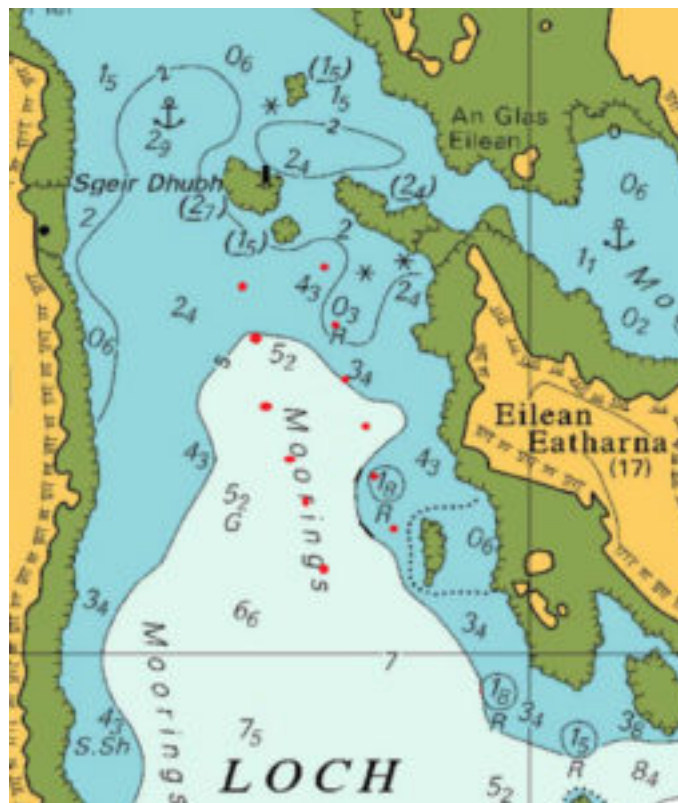
NTM 37/20 LOCH EATHARNA, ISLE of COLL PUBLIC MOORINGS

Categories : [Notice to Mariners](#)

Date : 10th July 2020

Latitude **56° 36.998?** North (WGS-84 datum)
Longitude **006° 31.084?** West (WGS-84 datum)

Due to continuing operational challenges persisting from the Covid-19 lockdown, CMAL are currently unable to reinstate the public moorings in Loch Eatharna, Isle of Coll



Mariners are advised that the individual mooring blocks (approximate positions shown in red above) and chain risers remain on the seabed in this area and care should be taken if anchoring in the vicinity.

Further details can be obtained using the contact details below

David McHardie

Harbour Master
Caledonian Maritime Assets Limited

Municipal Buildings,
Fore St. Port Glasgow
PA1 4 5EQ

Tel: 01475 749 920